



Hamilton

Concession Street and Mountain Brow Boulevard 2022 Construction

PUBLIC INFORMATION CENTRE (PIC)

January 31, 2022

6:30 to 8:00PM

Agenda

- Welcome from Councillor Tom Jackson
- Housekeeping Rules
- Representatives
- Project Details
- Question and Answer Session
- Meeting Adjournment

House Keeping Rules

- Microphones will be Muted.
 - Question and Answer Session will follow the Presentation.
 - Please email questions and the Slide being discussed to;
 - ❖ designservices@hamilton.ca
 - Questions will be taken one at a time in the order they are received.
 - Emails Responses will be provided to Questions that are not answered during the allotted time or require Consultation with City Staff.
-

- After tonight, please email any questions to;
 - ❖ Lin.Dou@hamilton.ca
- Tonight's PowerPoint Presentation will be available through the Councillors Office.
- The Concession St and Mountain Brow Improvements Project Website has been created at www.hamilton.ca/mountainbrow

Staff Representatives

- Engineering Services inclusive of:
 - ❖ Susan Jacob → Manager of Design
 - ❖ Chris McCafferty → Senior Project Manager
 - ❖ Lin Dou and Nasrin Firouzbakht → Design Team

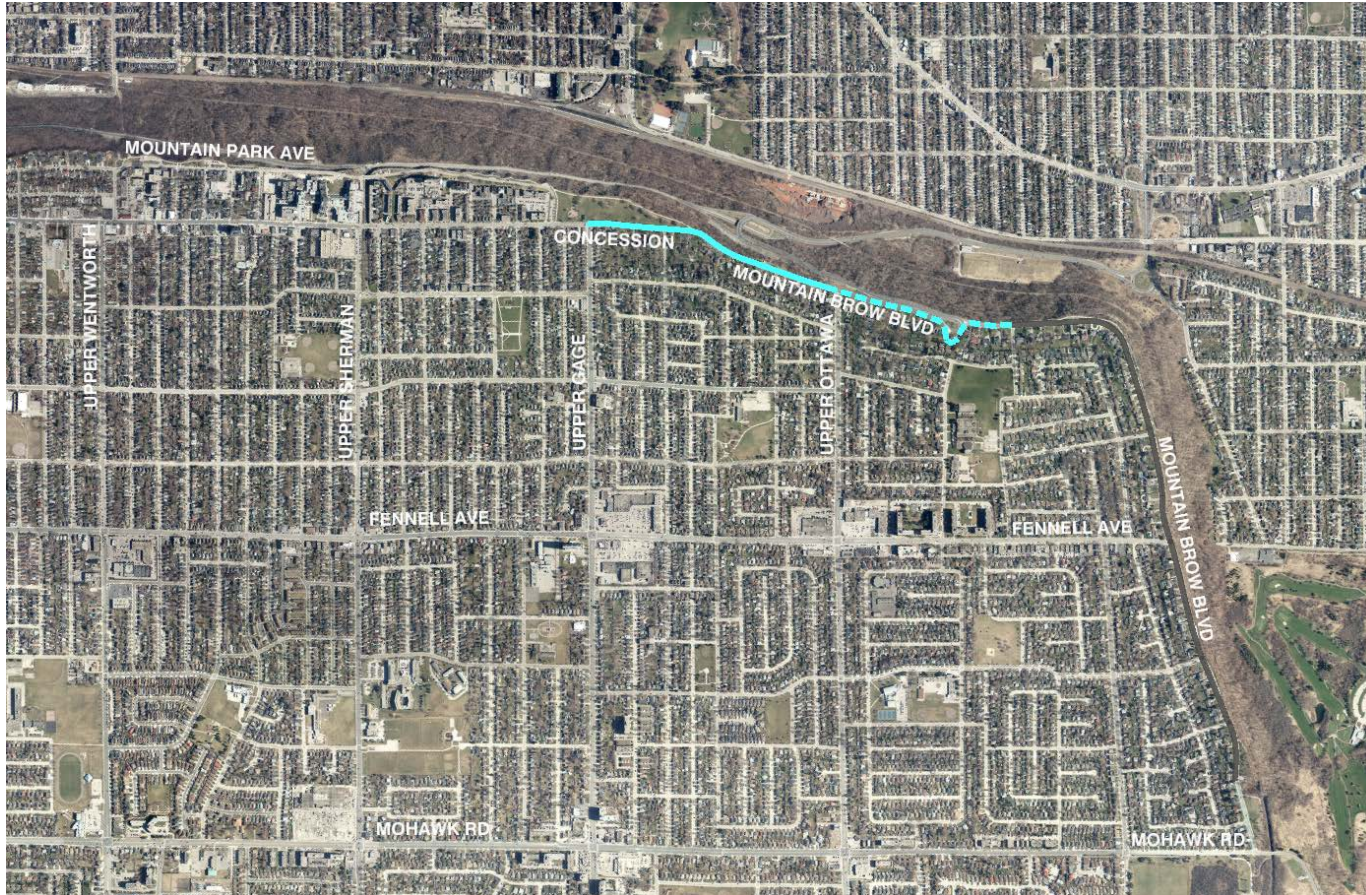
- Transportation Operation & Maintenance inclusive of:
 - ❖ Mike Field → Acting Director
 - ❖ Lanre Akindipe → Acting Senior Project Manager, Transportation Systems
 - ❖ Mushfiqur Rahman → Senior Project Manager, Transportation Engineering
 - ❖ Bakir Fayad → Project Manager, Pedestrian and Cycling Engineering

Project Details

Project Limits

Concession/Mountain Brow Blvd
From: Upper Gage Ave
To: Oakcrest Dr

Active Transportation Improvements,
Sidewalk Construction, Road
Reconstruction and Resurfacing

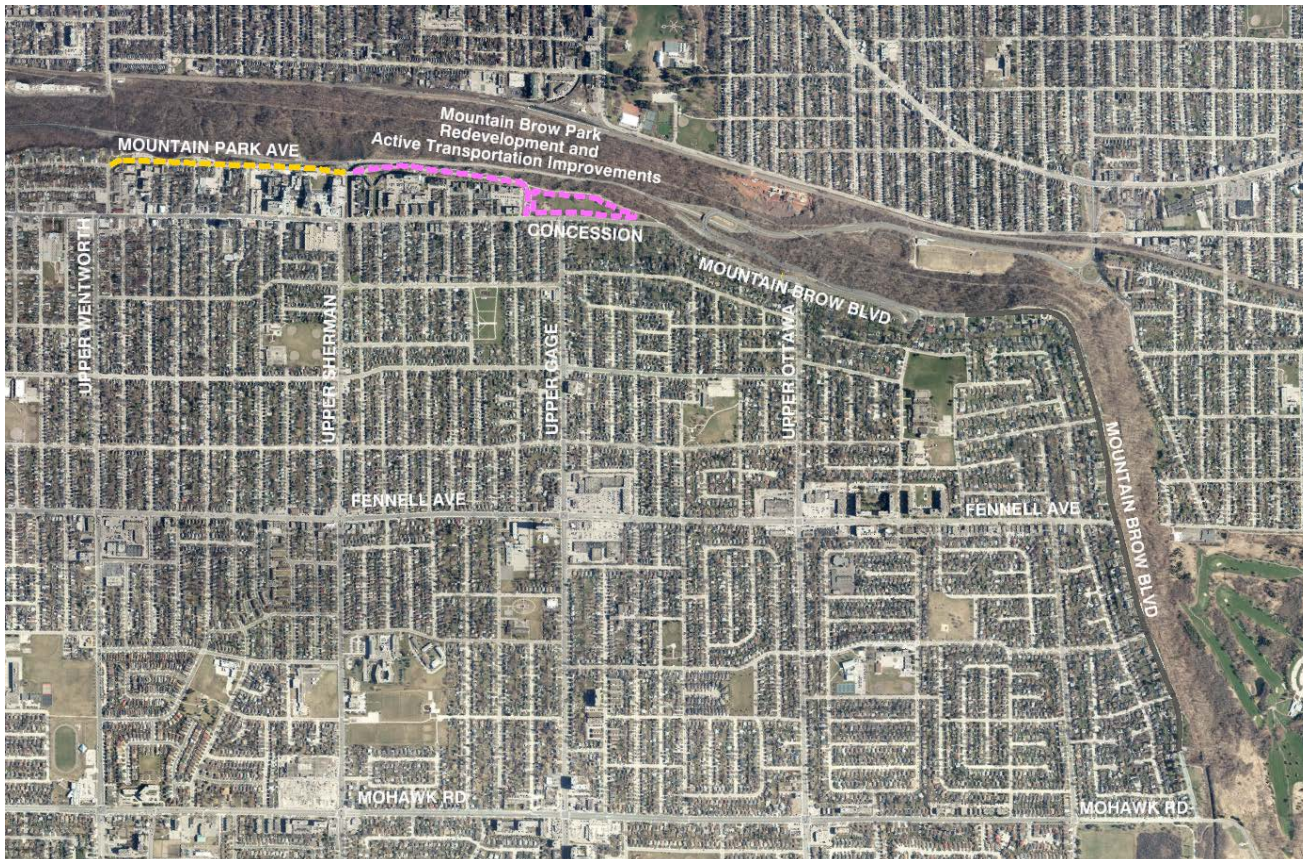


Adjacent Projects

Mountain Park Avenue
From: Upper Wentworth
To: Upper Sherman

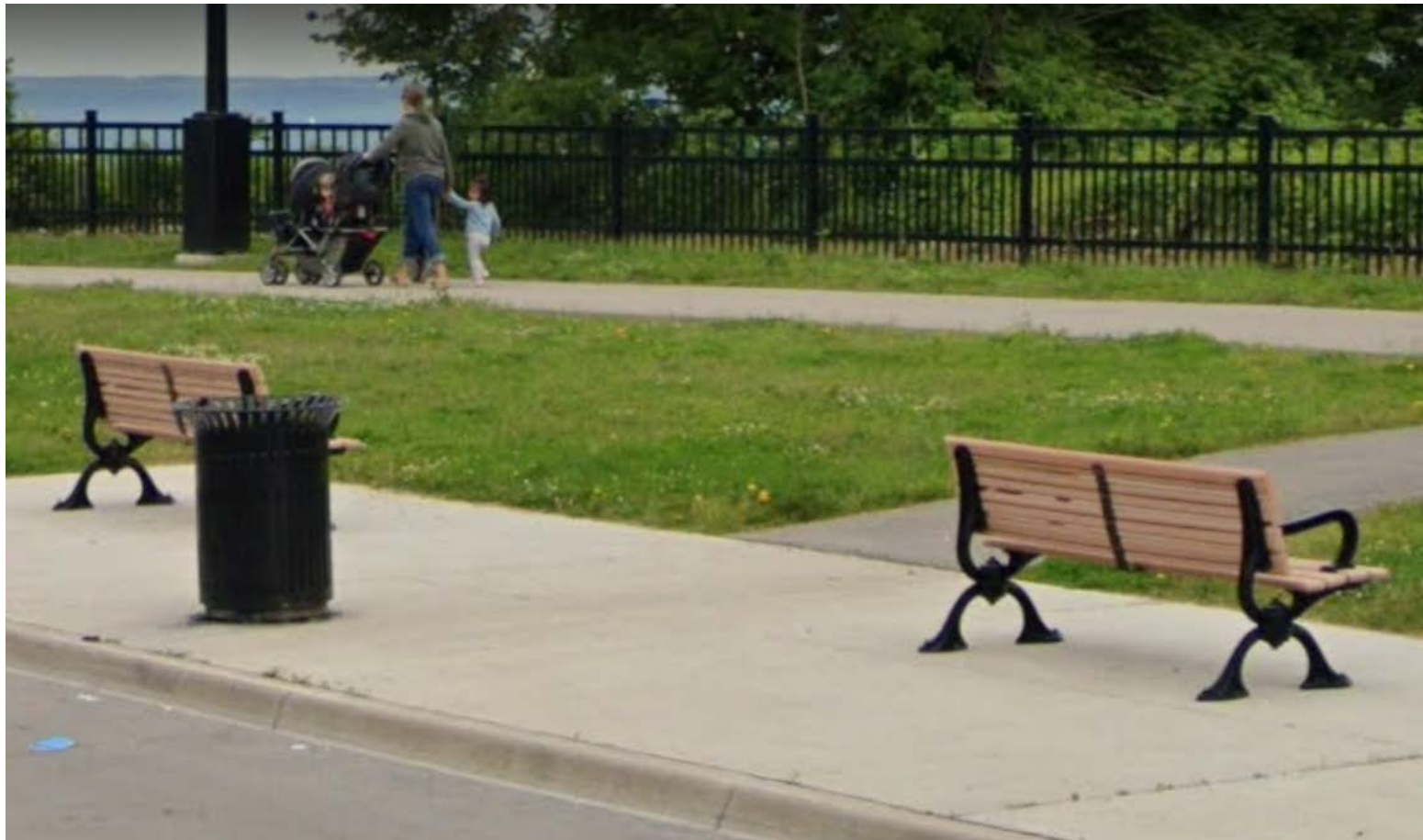
Mountain Drive Masterplan:
Park Redevelopment and
Active Transportation

Mountain Brow Blvd:
Phase I - Completed



Street Furniture

Shall be provided consistent with those used in the completed Mountain Brow Blvd project.



Solar Lighting

Shall be provided on the Escarpment side of the Road where gaps are identified by an Illumination Review. Products will be consistent with those used in the completed Mountain Brow Blvd project.



Ornamental Fencing

Shall be provided consistent with the completed Mountain Brow Blvd project except that the height will be increased to 1.5m as required by the Constrained Corridor and to address User Safety.



Project Scope: Concession and Mountain Brow

Upper Gage to Upper Ottawa

- Roadway Construction/Narrowing and Watermain Replacement

Upper Ottawa to Oakcrest

- Roadway Milling and Paving

Mountain Drive Park to Upper Ottawa

- Active Transportation Facilities ... Multi-Use Path, Sidewalks and Cycling Lanes
- Installation of Black Ornamental Fencing
- Solar Lighting Review for Active Transportation Facilities

Upper Ottawa to Oakcrest

- Active Transportation Facilities ... Multi-Use Facility at Road Level
Achieved through Repurposing of South Curb Lane

Conversion of Billy Foley Parkette Parking Lot to Layby Parking

Upper Gage to East 43rd

Option A: Retention of North Sidewalk Upper Gage to East 43rd



ROADS ASPHALT MULTI-USE or CYCLING FACILITIES CONCRETE SIDEWALK AND AMENITY AREAS

Option A: Retention of North Sidewalk Upper Gage to East 43rd



Option B: Conversion of North Sidewalk to Multi-Use Path Upper Gage to East 43rd



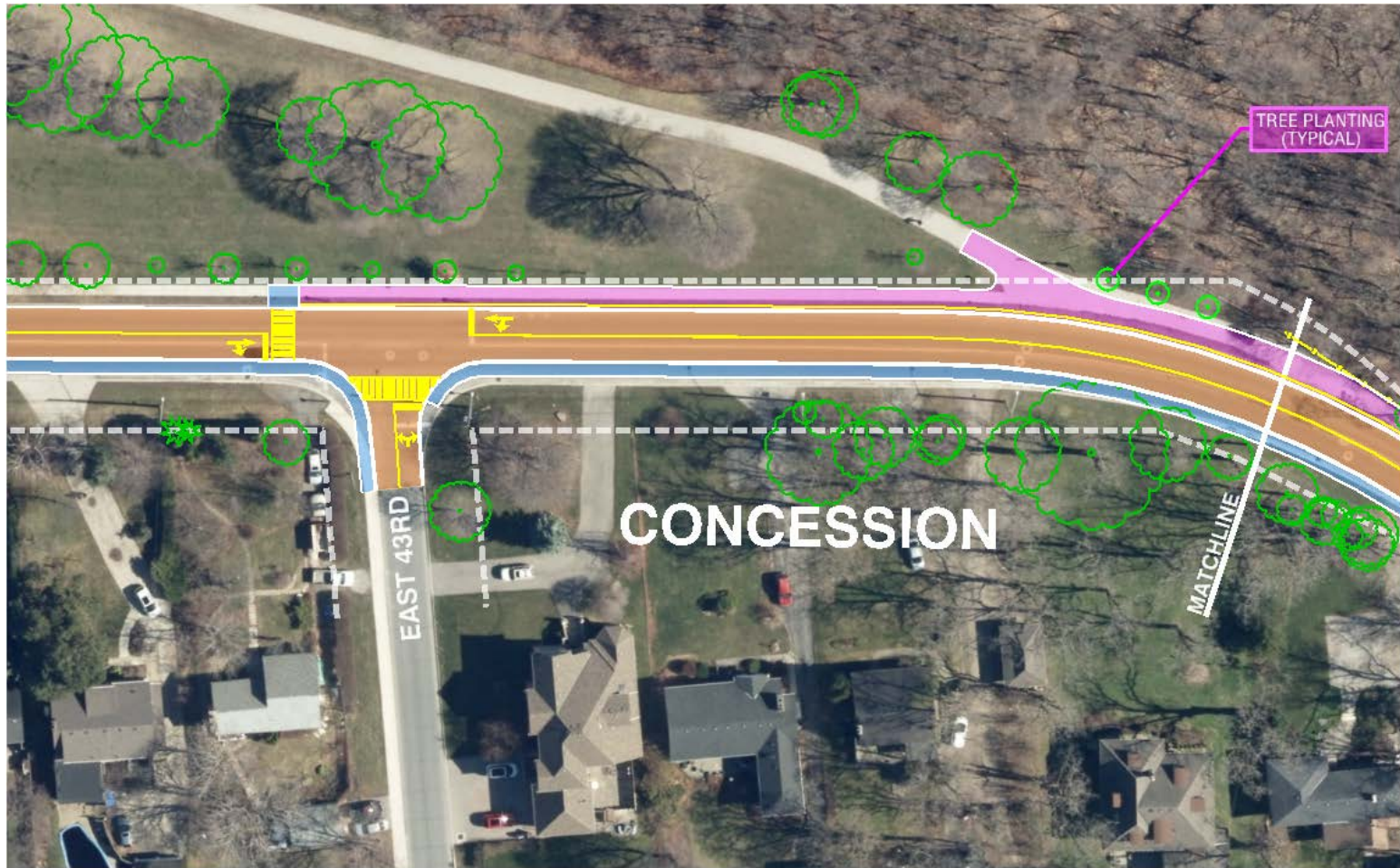
ROADS ASPHALT MULTI-USE or CYCLING FACILITIES CONCRETE SIDEWALK AND AMENITY AREAS

Option B: Conversion of North Sidewalk to Multi-Use Path Upper Gage to East 43rd



East 43rd to Rendell

Concession/Mountain Brow Blvd East 43rd to Rendell (1 of 3)

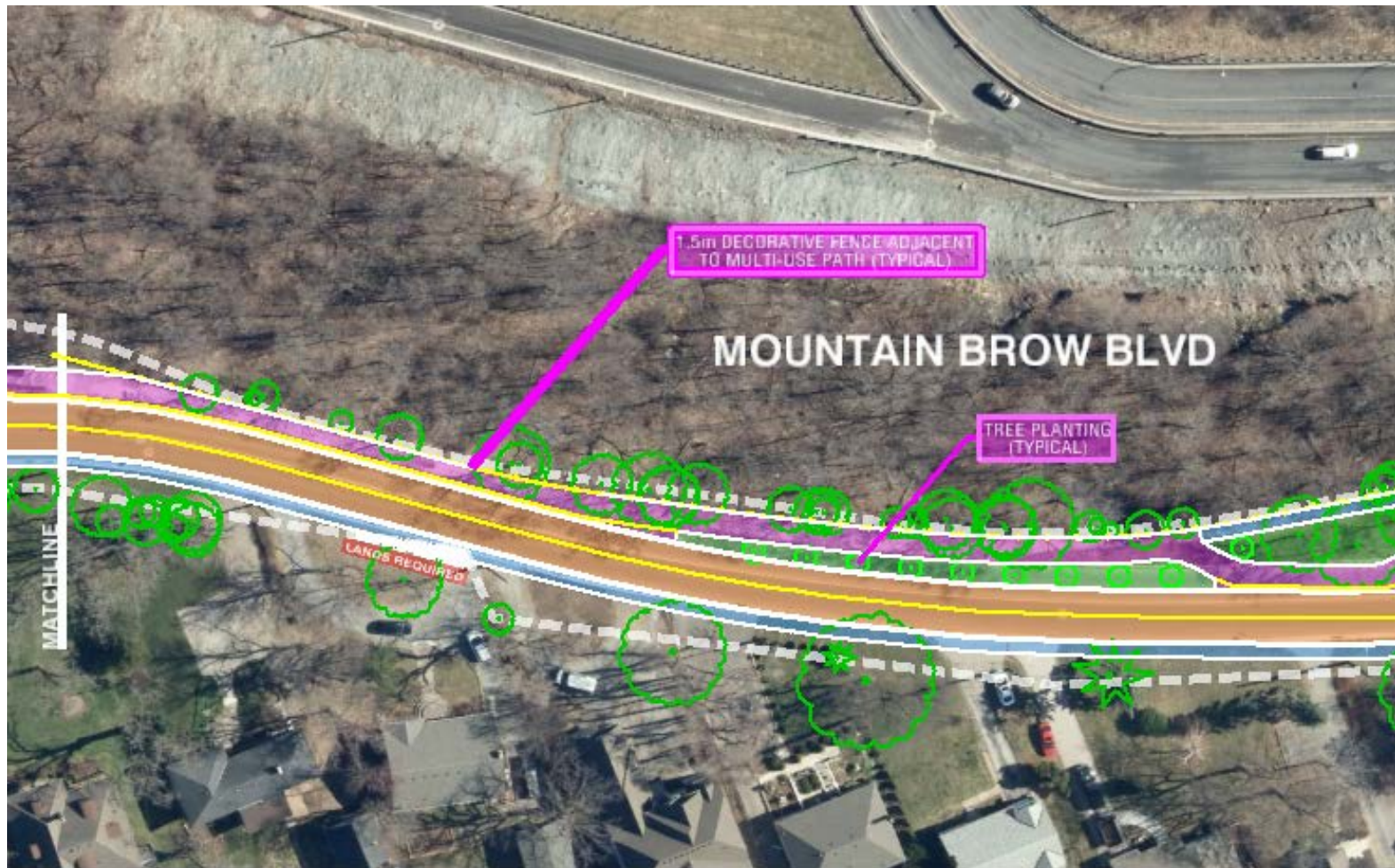


ROADS

ASPHALT MULTI-USE or CYCLING FACILITIES

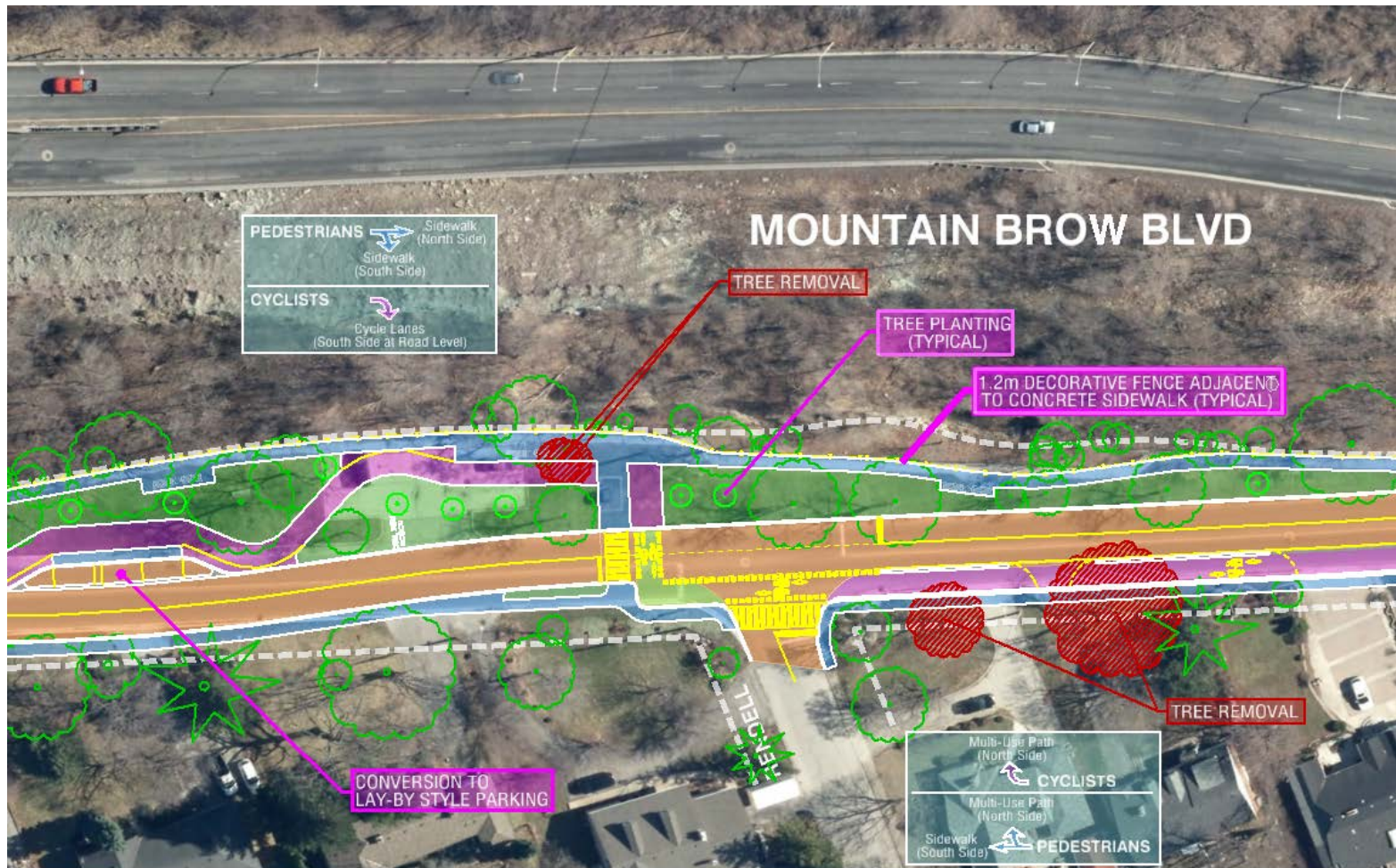
CONCRETE SIDEWALK AND AMENITY AREAS

Concession/Mountain Brow Blvd East 43rd to Rendell (2 of 3)



ROADS ASPHALT MULTI-USE or CYCLING FACILITIES CONCRETE SIDEWALK AND AMENITY AREAS

Concession/Mountain Brow Blvd East 43rd to Rendell (3 of 3)

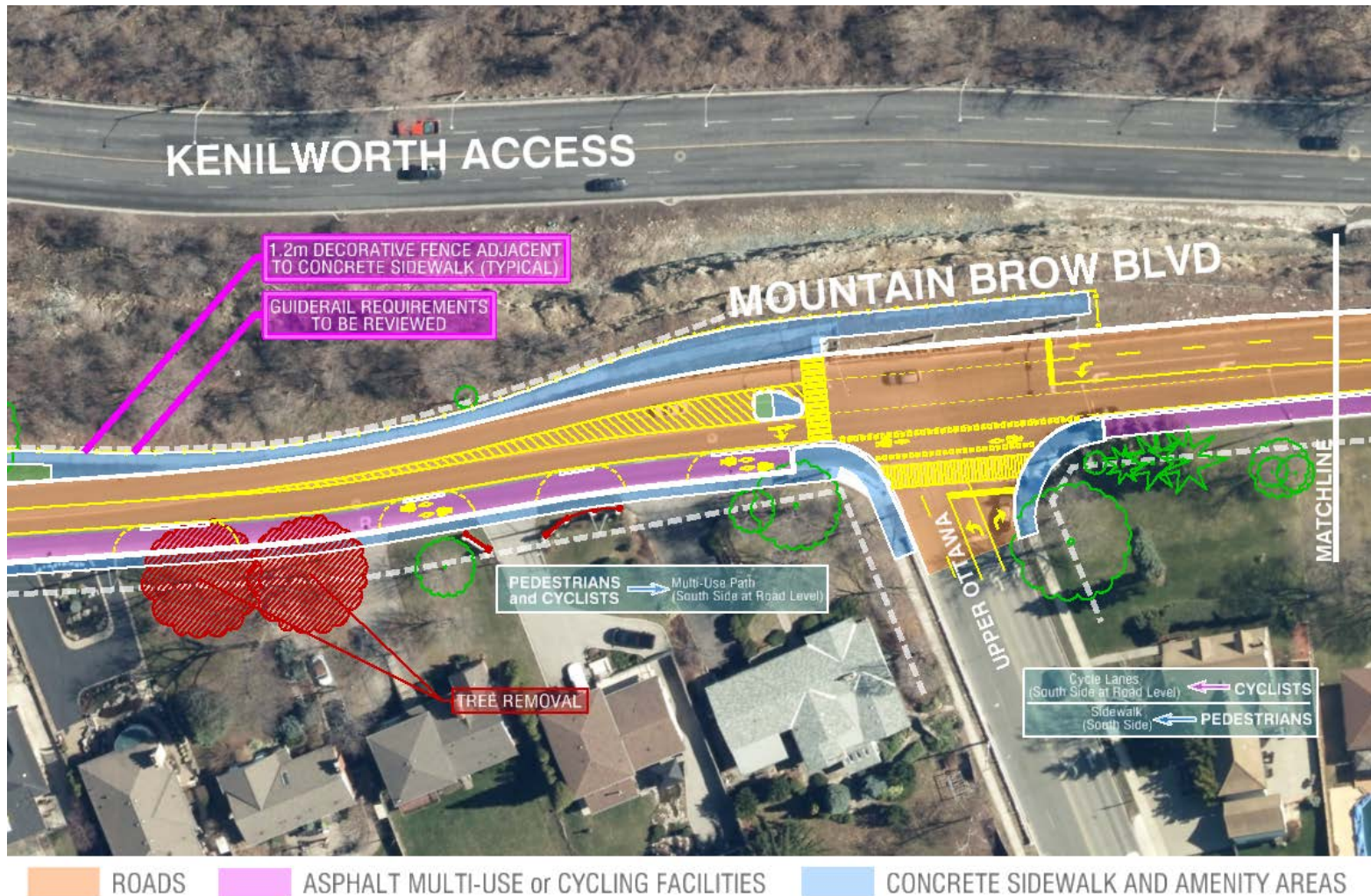


ROADS ASPHALT MULTI-USE or CYCLING FACILITIES CONCRETE SIDEWALK AND AMENITY AREAS

Upper Ottawa to Oakcrest

OPTION 1

Concession/Mountain Brow Blvd OPTION 1 - Upper Ottawa to Oakcrest (1 of 4)

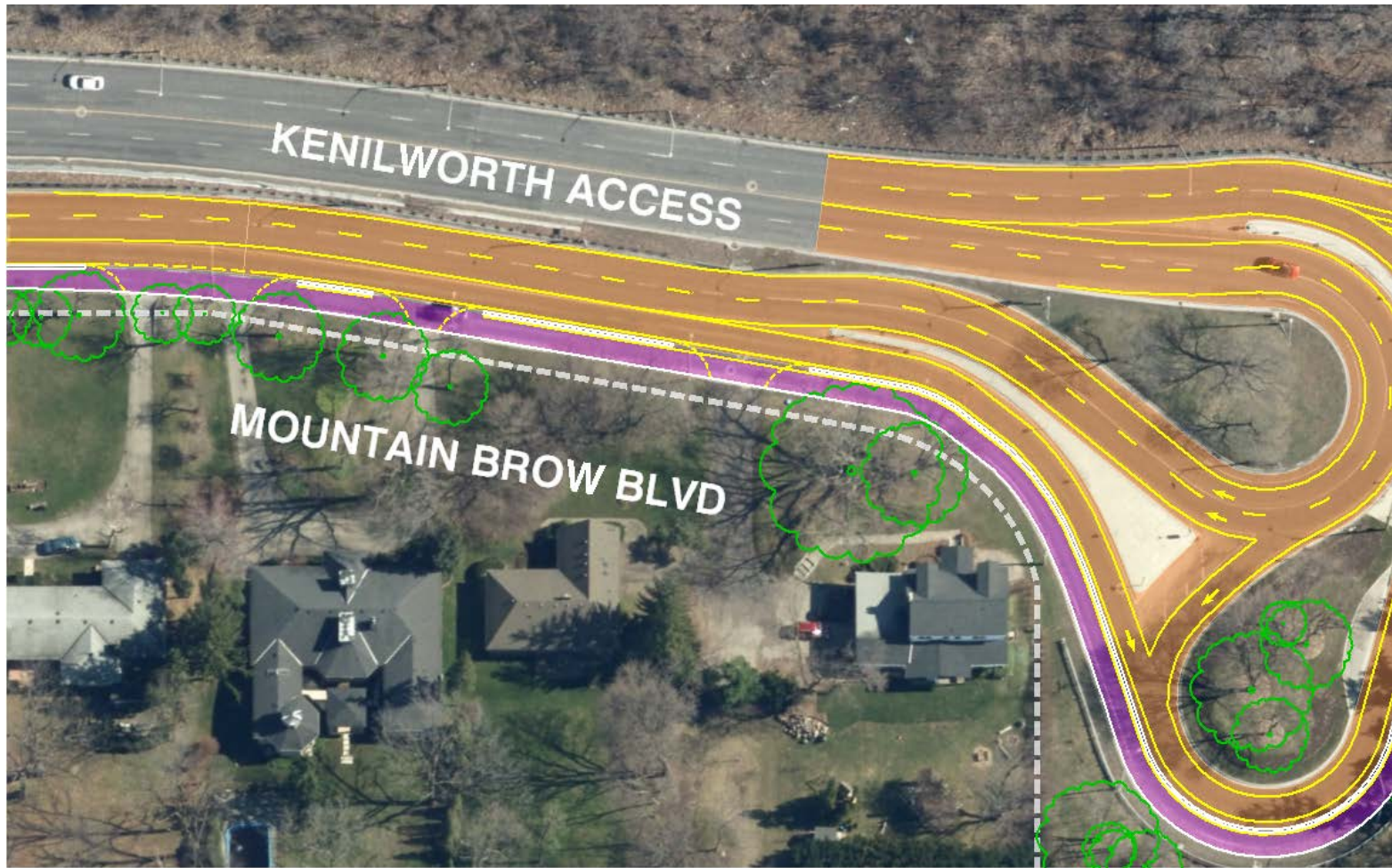


Concession/Mountain Brow Blvd OPTION 1 - Upper Ottawa to Oakcrest (2 of 4)



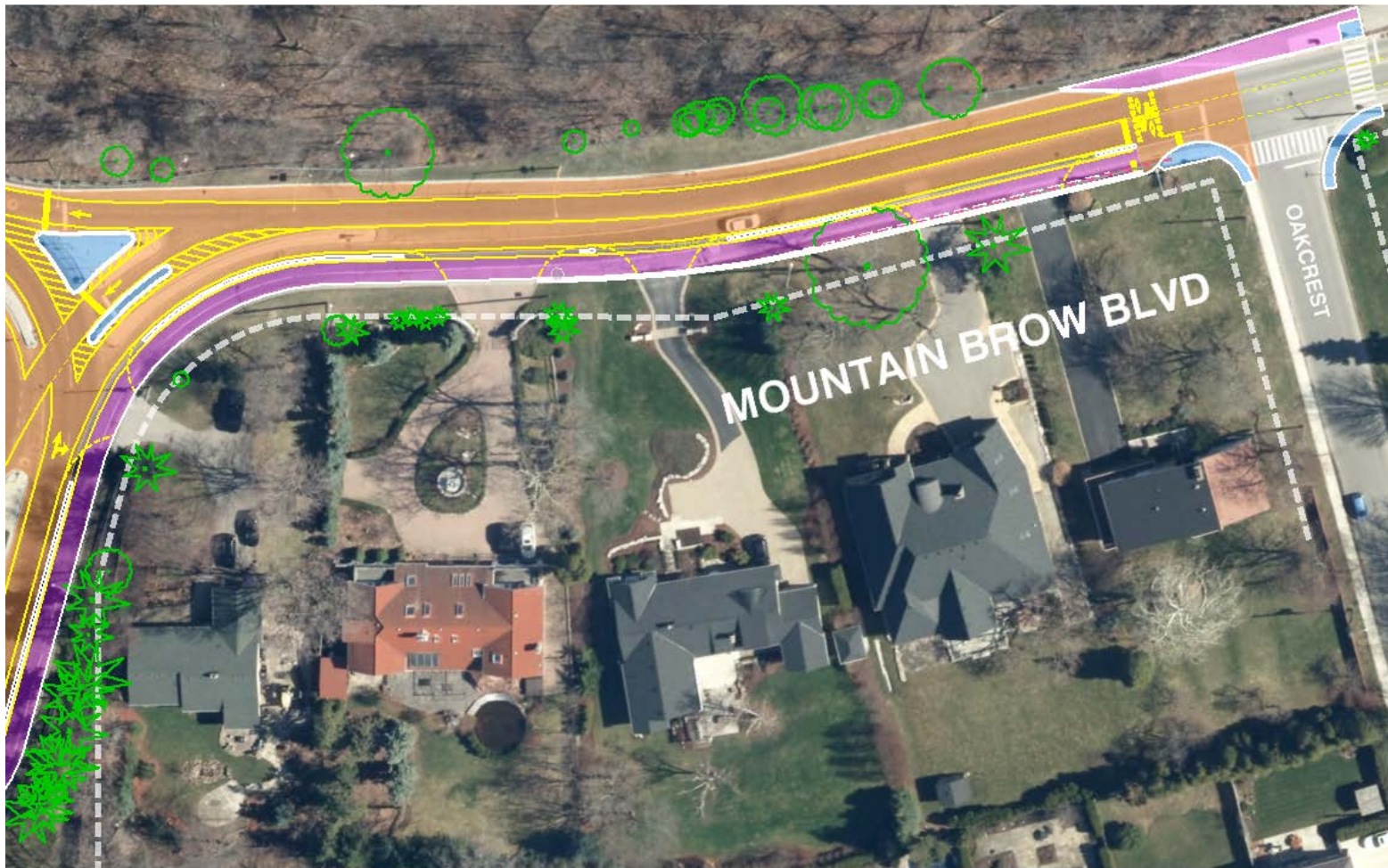
ROADS ASPHALT MULTI-USE or CYCLING FACILITIES CONCRETE SIDEWALK AND AMENITY AREAS

Concession/Mountain Brow Blvd OPTION 1 - Upper Ottawa to Oakcrest (3 of 4)



ROADS ASPHALT MULTI-USE or CYCLING FACILITIES CONCRETE SIDEWALK AND AMENITY AREAS

Concession/Mountain Brow Blvd OPTION 1 - Upper Ottawa to Oakcrest (4 of 4)



ROADS

ASPHALT MULTI-USE or CYCLING FACILITIES

CONCRETE SIDEWALK AND AMENITY AREAS

Upper Ottawa to Oakcrest

OPTION 2

Concession/Mountain Brow Blvd OPTION 2 - Upper Ottawa to Oakcrest (2 of 4)



 ROADS  ASPHALT MULTI-USE AND CYCLING FACILITY  CONCRETE SIDEWALK AND AMENITY AREAS

Concession/Mountain Brow Blvd OPTION 2 - Upper Ottawa to Oakcrest (3 of 4)

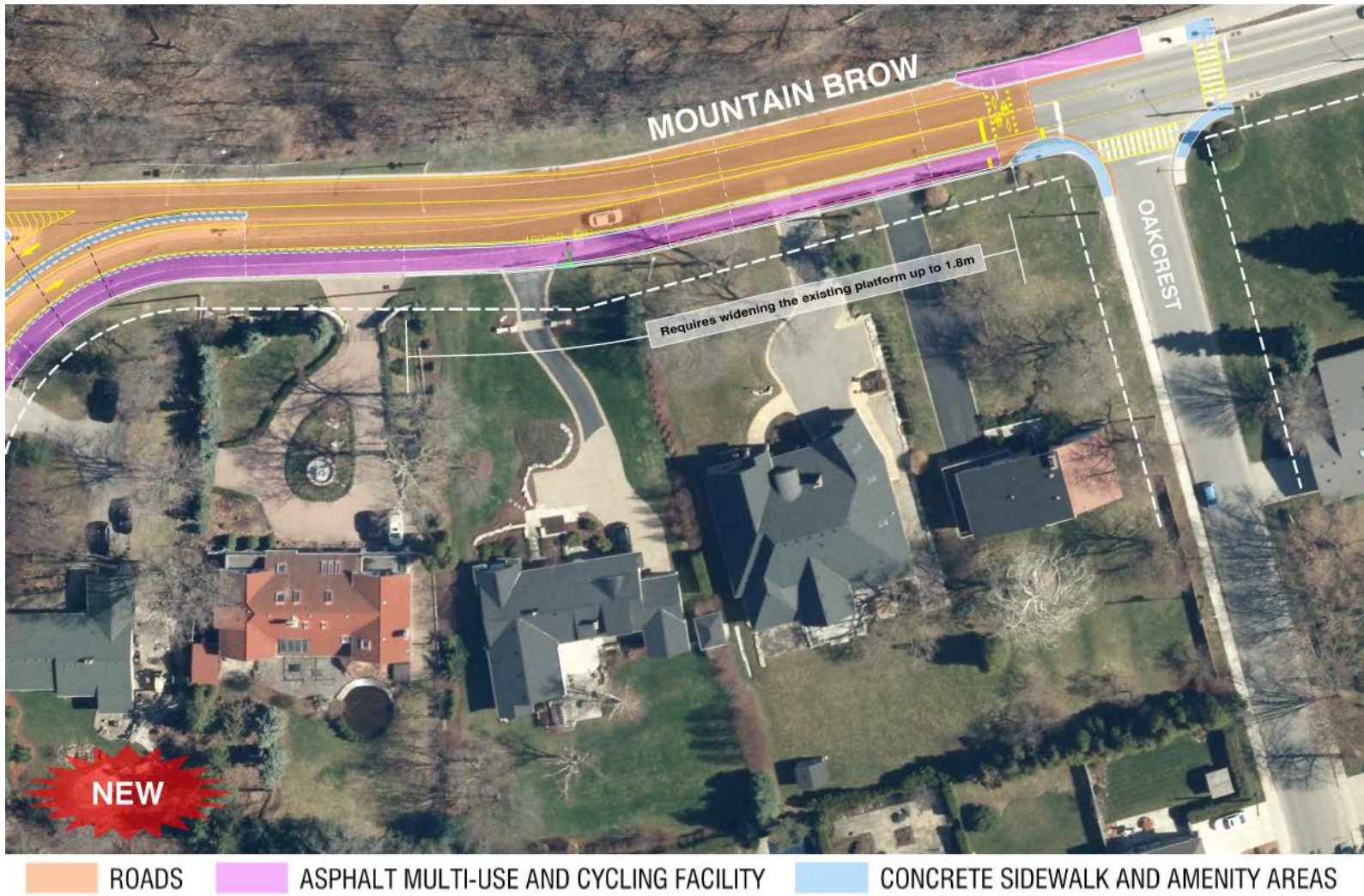


ROADS

ASPHALT MULTI-USE AND CYCLING FACILITY

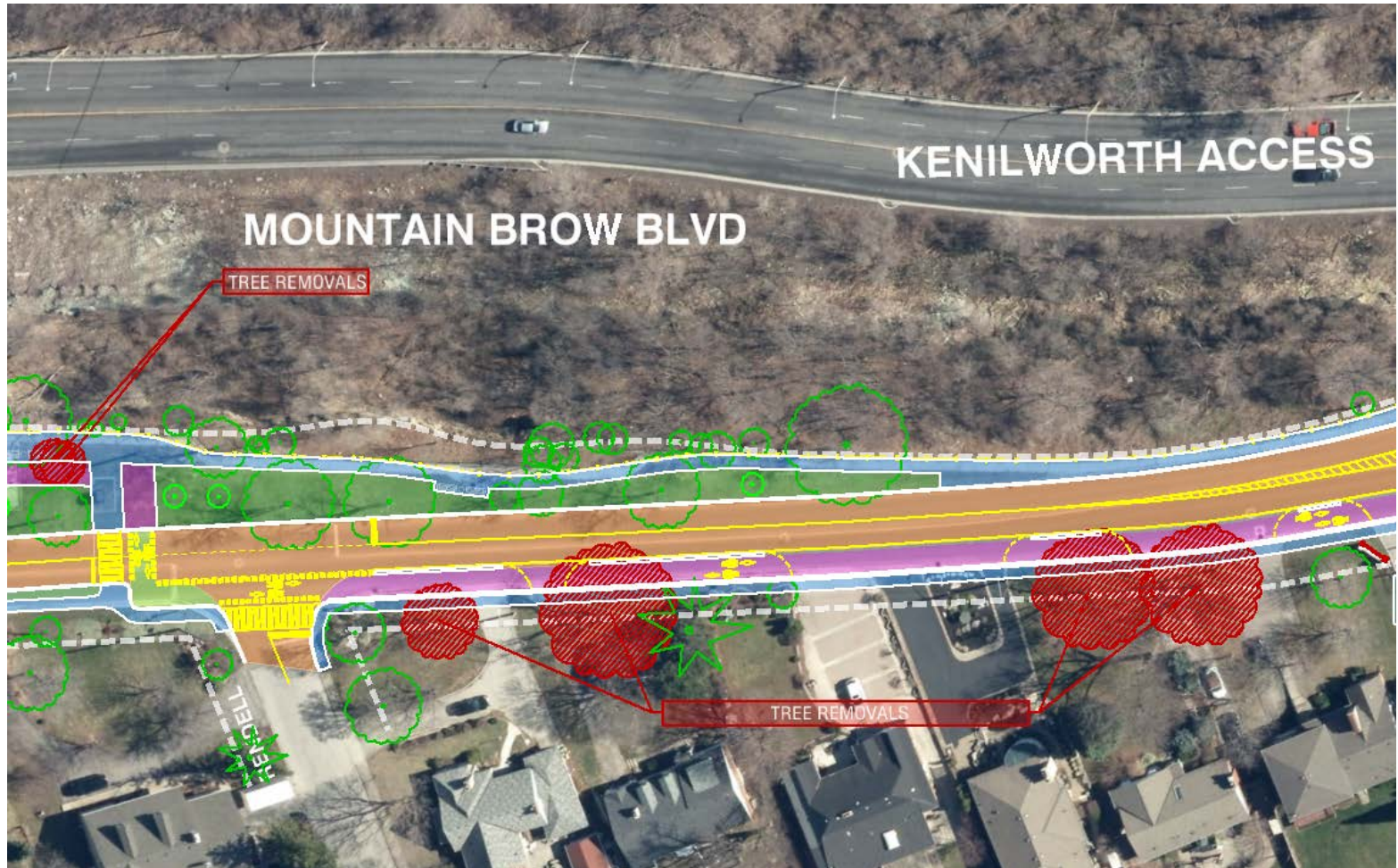
CONCRETE SIDEWALK AND AMENITY AREAS

Concession/Mountain Brow Blvd OPTION 2 - Upper Ottawa to Oakcrest (4 of 4)



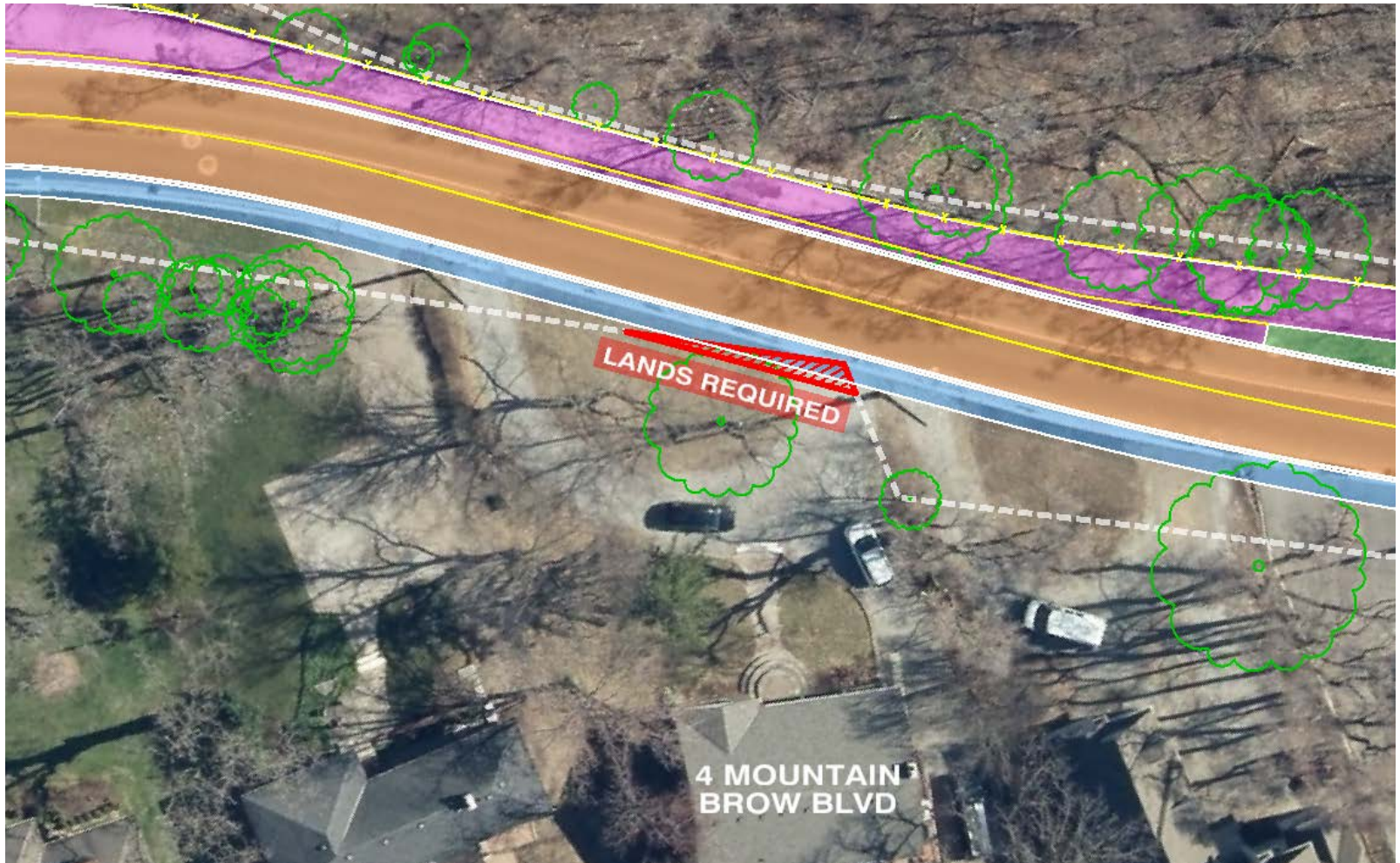
Anticipated Tree Removals

Concession/Mountain Brow Blvd Anticipated Tree Removals



Land Acquisition

Concession/Mountain Brow Blvd Land Acquisition



Multi-Use Path, Cycling Lanes and Sidewalk Treatments

Multi-Use Path (North Side) - East 43rd to Rendell

NOTE: Sidewalk provided on South Side



Bi-Directional Cycling Lanes and Sidewalk (South Side) Rendell to Upper Ottawa

NOTE: Multi-Use Path provided on North Side



Bi-Directional Multi-Use Path at Road Level (South Side) Upper Ottawa to Oakcrest



Questions and Answers

Thank You for your Feedback

City of Hamilton Contact Information

Concession/Mountain Brow

Lin Dou

Lin.Dou@hamilton.ca

905-546-2424 ext. 2437