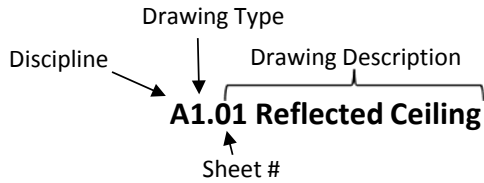


City of Hamilton
ePLANS File Naming Standard



| Discipline | Drawing Type | Syntax | Example |
|----------------------------------|---------------------|--------|---|
| Architectural | Cover Sheet/Notes | A0 | A0.01 Cover Sheet, A0.02 General Notes |
| | Floor Plans | A1 | A1.01 Floor Plan - Basement to 7 Floors, A1.02 Reflected Ceiling Plan |
| | Elevations | A2 | A2.01 Elevations, A2.02 Elevation - North |
| | Details | A3 | A3.01, A3.02, A3.03 Details |
| | Sections | A4 | A4.01, A4.02, A4.03 Sections |
| | Additional Drawings | A5 | A5.01 Travel Distances, A5.02 Hoarding Plan, A5.03 Fire Safety Plan |
| Electrical | Cover Sheet/Notes | E0 | E0.01 Cover Sheet, E0.02 General Notes |
| | Floor Plans | E1 | E1.01 Floor Plan, A1.02 Reflected Ceiling Plan |
| | Elevations | E2 | E2.01, E2.02, E2.03 Elevation |
| | Details | E3 | E3.01, E3.02, E3.03 Details |
| | Sections | E4 | E4.01, E4.02, E4.03 Sections |
| | Additional Drawings | E5 | E5.01 Hardware Schedule, E5.02 Electromagnetic Locks |
| Foundations/ Footings | Cover Sheet/Notes | F0 | F0.01 Cover Sheet, F0.02 General Notes |
| | Floor Plans | F1 | F1.01 Footing Layout |
| | Elevations | F2 | F2.01, F2.02, F2.03 Elevation |
| | Details | F3 | F3.01, F3.02, F3.03 Details |
| | Sections | F4 | F4.01, F4.02, F4.03 Sections |
| | Additional Drawings | F5 | F5.01 Shoring Plan, F5.02 Excavation, F5.03 Schedules |
| Interior Design | Cover Sheet/Notes | ID0 | ID0.01 Cover Sheet, ID0.02 General Notes |
| | Floor Plans | ID1 | ID1.01, ID1.02, ID1.03 Floor Plans |
| | Elevations | ID2 | ID2.01 Elevations, ID2.02 Elevation - North |
| | Details | ID3 | ID3.01, ID3.02, ID3.03 Details |
| | Sections | ID4 | ID4.01, ID4.02, ID4.03 Sections |
| | Additional Drawings | ID5 | ID5.01, ID5.02, ID5.03 Additional Drawings |
| Mechanical/ HVAC | Cover Sheet/Notes | M0 | M0.01 Cover Sheet, M0.02 General Notes |
| | Floor Plans | M1 | M1.01 Floor Plan, M1.02 Reflected Ceiling Plan |
| | Elevations | M2 | M2.01 Elevations, M2.02 Elevation - North |
| | Details | M3 | M3.01, M3.02, M3.03 Details |
| | Sections | M4 | M4.01, M4.02, M4.03 Sections |
| | Fire Protection | M5 | M5.01 Sprinkler Plan, M5.01 Standpipe Plan |
| | Additional Drawings | M6 | M6.01, M6.02, M6.03 Additional Drawings |
| Plumbing | Cover Sheet/Notes | P0 | P0.01 Cover Sheet, P0.02 General Notes |
| | Floor Plans | P1 | P1.01, P1.02, P1.03 Floor Plans |
| | Elevations | P2 | P2.01 Elevations, P2.02 Elevation - North |
| | Details | P3 | P3.01, P3.02, P3.03 Details |
| | Sections | P4 | P4.01, P4.02, P4.03 Sections |
| | Additional Drawings | P5 | P5.01, P5.02, P5.03 Additional Drawings |
| Site Plan | Cover Sheet/Notes | SP0 | SP0.01 Cover Sheet, SP0.02 General Notes |
| | Plan Views | SP1 | SP1.01 Site Plan, SP1.02 Fire Access Route |
| | Elevations | SP2 | SP2.01 Elevations, SP2.02 Elevation - North |
| | Details | SP3 | SP3.01 Gateway Detail |
| | Additional Drawings | SP4 | SP4.01 Landscaping, SP4.02 Grading, SP4.03 Survey |
| Structural | Cover Sheet/Notes | S0 | S0.01 Cover Sheet, S0.02 General Notes |
| | Framing Plans | S1 | S1.01 Floor Framing Plan |
| | Elevations | S2 | S2.01 Elevations, S2.02 Elevation |
| | Details | S3 | S3.01, S3.02, S3.03 Details |
| | Sections | S4 | S4.01, S4.02, S4.03 Sections |
| | Additional Drawings | S5 | S5.01 Shear Wall, S5.02 Schedules |